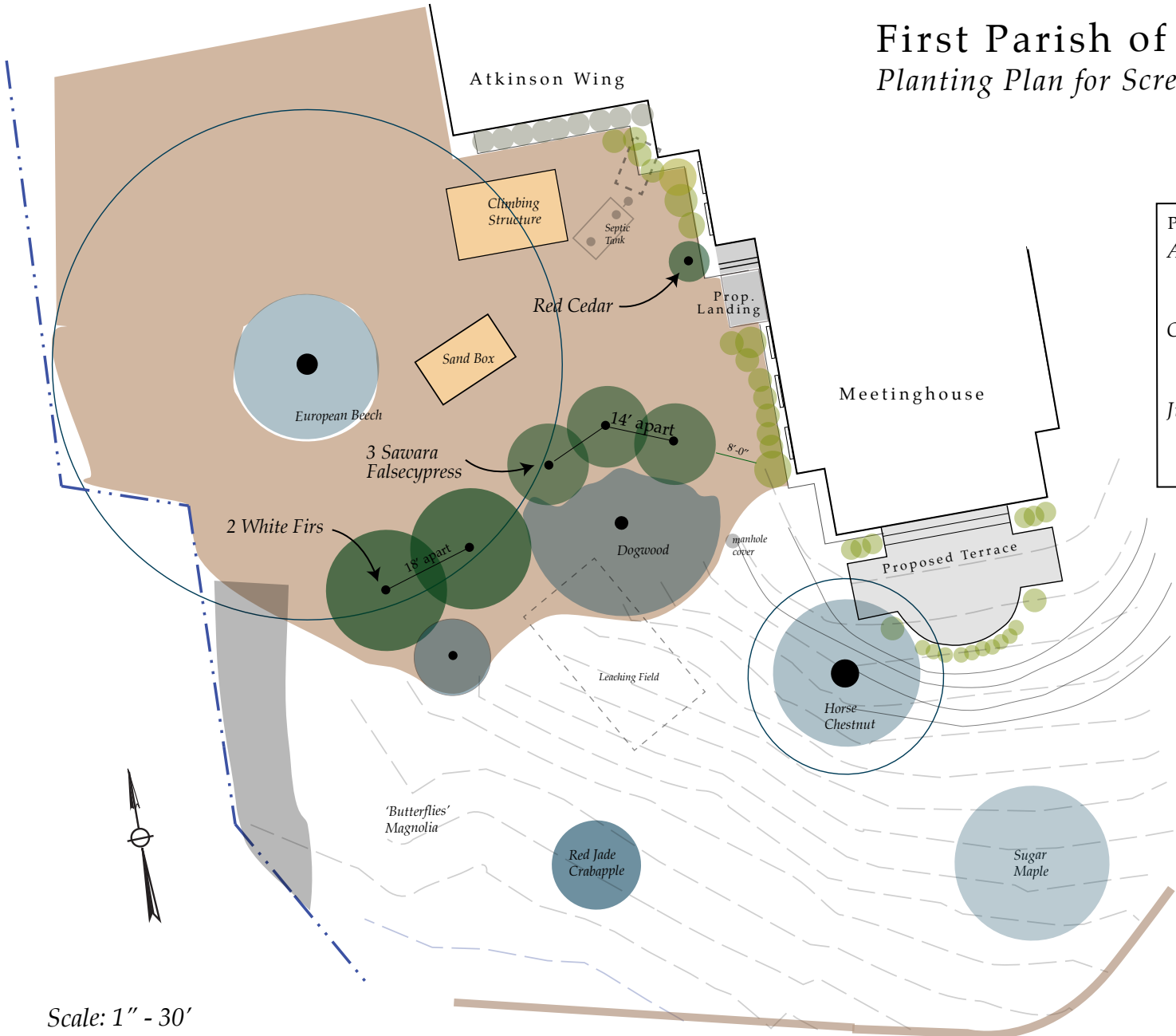


First Parish of Sudbury

Planting Plan for Screening Atkinson Wing



PLANT LIST:

<i>Abies concolor</i>
White Fir
30-40' x 20-25'
<i>Chamaecyparis pisifera filifera</i>
Sawara Falsecypress
12-15' x 10-12'
<i>Juniperus virginiana 'Emerald Sentinel'</i>
Red Cedar
15-20' x 6-8'

KEY:

	Existing Trees: Ground Covered
	Extent of Overhead Canopy
	Proposed Pyramidal Evergreen Trees
	Possible Additional Plantings
	Playground; Mulched Area
	Truck Access

Deborah Kruskal for First Parish
Landscape Committee

February, 2014

Scale: 1" - 30'